

## Exciting new features in Intelligence Reporting



Some of the exciting usability and performance enhancements to look forward to in the latest release of Sage Pastel Evolution Intelligence Reporting include:

### More control over your financial reports

The new Report Designer (previously known as the BIC Excel Genie) boasts a fresh new user interface, and has vast improvements in performance through its powerful new In-Memory technology\*, giving you a quick and responsive experience when designing reports in the familiar interface of Microsoft® Excel®.

The new Report Designer gives you two methods to create your financial reports depending on your Excel knowledge.

### Layout Generator

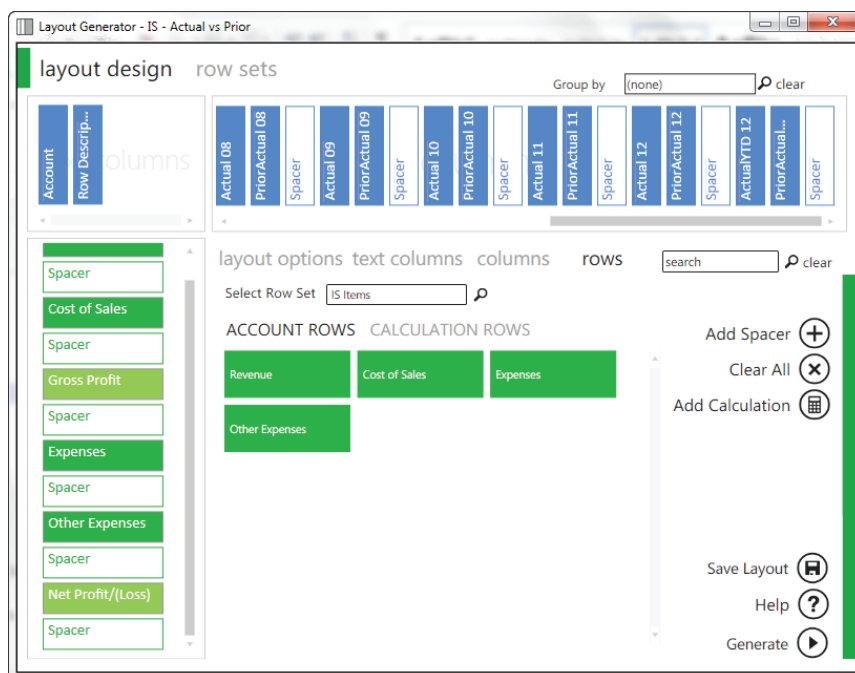
The Layout Generator, is easy to use and automates the design and generation of simple financial report layouts quickly and accurately within Excel. If you're still getting used to Excel, the Layout Generator provides you with a set of standard financial layouts to get you up and running immediately and these can then be edited to suit your unique requirements.

### Benefits

- Get better control of your reporting.
- Automate your reporting processes.
- Make better decisions through better analysis of your data.

“It saves us so much time. More importantly, the amount and type of information we can get out of our systems now helps us to make better business decisions.”

Susan le Roux, Financial Manager,  
In Our Green House



Layout Generator interface for wizard driven creation of financial layouts.

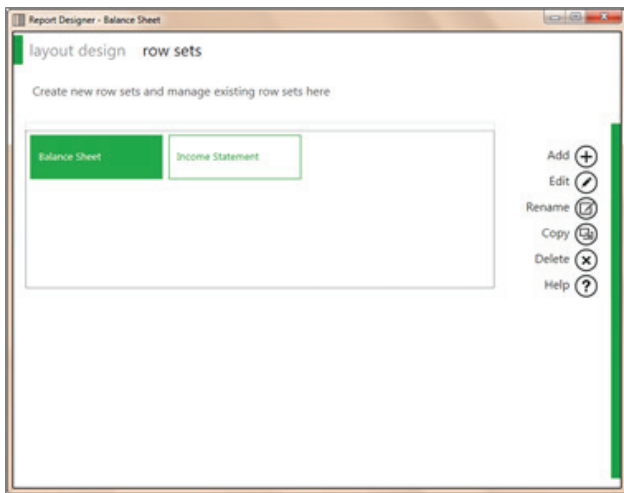
\*An In-Memory database system is a database management system that stores data entirely in your computer's RAM. Because working with data In-Memory is much faster, Intelligence Reporting is now able to report on larger data volumes, greatly enhancing the performance of your financial reporting

# Sage Evolution Version 7 Intelligence Reporting

The generated layouts have also been given a cleaner look and feel and are now easier to customize using the Task Pane once your layout is created.

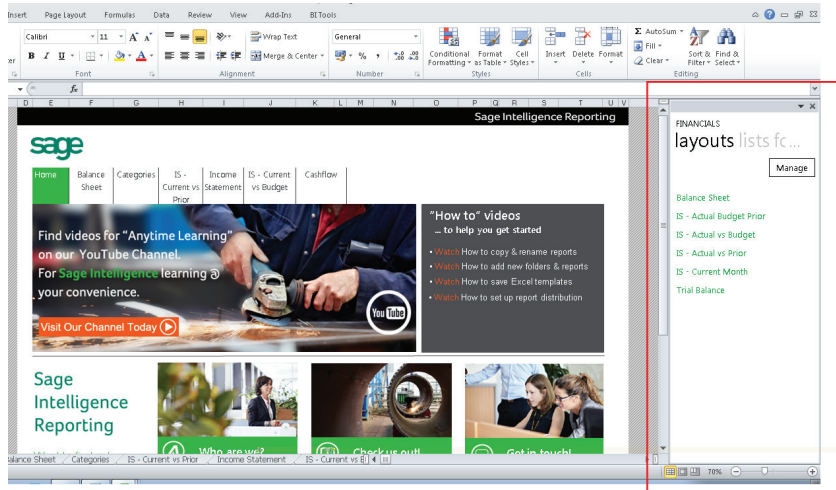
Another fantastic feature of the Layout Generator is **Row Sets\***. Row Sets allow users to create a grouping of accounts that will be displayed as a single row in a report. These Row Sets allow users to create “categories” of accounts that can be used repetitively, making the creation of reports that much quicker and easier for you.

Row Sets can be created using fixed account types, or if you would like the added flexibility you can fully customise which account numbers make up a row set.



## Task Pane

If you're more familiar with Excel, the new Task Pane greatly enhances your Excel reporting experience, by providing instant and dynamic access to data within the General Ledger. Simply drag in data lists, formulas, or Reporting Trees from the Task Pane on the right hand side of the Excel window and the In-Memory technology will update results instantaneously. You can also change the level of detail seen at a row level by using account ranges, account wildcards and account exclusions giving you maximum control and flexibility over your financial report layouts.



Task Pane Interface with an Income Statement by Product

\*Row Sets is a collection of row groupings based on account rules and ranges which you define according to your reporting needs.

# Sage Evolution Version 7 Intelligence Reporting

## Missing Reports

Intelligence Reporting has introduced a new feature which allows you to view the accounts that are missing from your entire report or from the current layout compared to the accounts that exist in the general ledger which has been retrieved by the In-Memory database.

Once a selection has been made, a message will appear keeping the user informed as to whether missing accounts were found, or if there are no accounts missing.

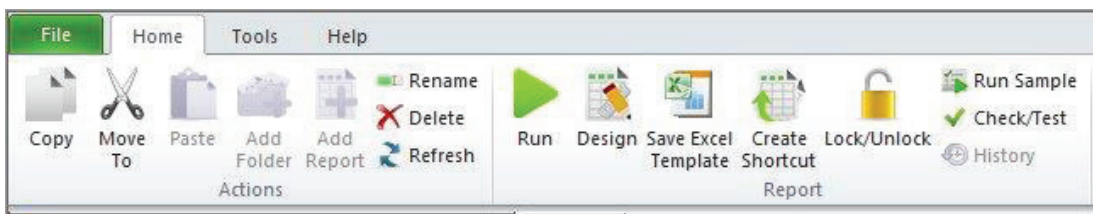
## Latest Microsoft Excel technology

Intelligence is now compatible with the 32-bit and 64-bit versions of Excel 2007, 2010, and 2013 to allow you to take full advantage of the latest Microsoft Excel functionality.

## Enhanced User Experience

### Easy access to commonly used features

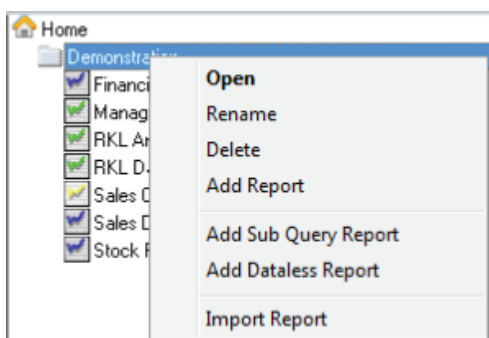
The Report Manager and Connector modules boasts a new ribbon feature with informative icons and labels for each function, aiding the user in easily identifying and accessing the features that they require. Menu items have been restructured and grouped and the more commonly used menu items are now accessible from the Home and Help tabs.



### Simplified Right-click Menu

The Right-click menus in the Report Manager have been simplified to provide the user with a more concise list of options as well as option labels that are more informative.

- The Right-click options “Run Sample” and “Refresh” on the Report Context right-click Menu have been removed and are now accessible in the Report Manager Ribbon via the Home tab.
- The Labels ‘Create and Link Template’ and ‘Purge Instance History’ have been replaced by less technical, and therefore more easily understandable, labels of ‘Save Excel Template’ and ‘Clear Report History’ respectively.



*Task Pane Interface with an Income Statement by Product and Region Dimension*

## About The Sage Group plc

We provide small and medium-sized organisations with a range of easy-to-use, secure and efficient business management software and services-from accounting and payroll, to enterprise resource planning, customer relationship management and payments. Our customers receive continuous advice and support through our global network of local experts to help them solve their business problems, giving them the confidence to achieve their business ambitions. Formed in 1981, Sage was floated on the London Stock Exchange in 1989 and entered the FTSE 100 in 1999. Sage has over 6 million customers and more than 12,700 employees in 24 countries covering the UK & Ireland, mainland Europe, North America, South Africa, Australia, Asia and Brazil. For further information please visit: [www.sage.com](http://www.sage.com)