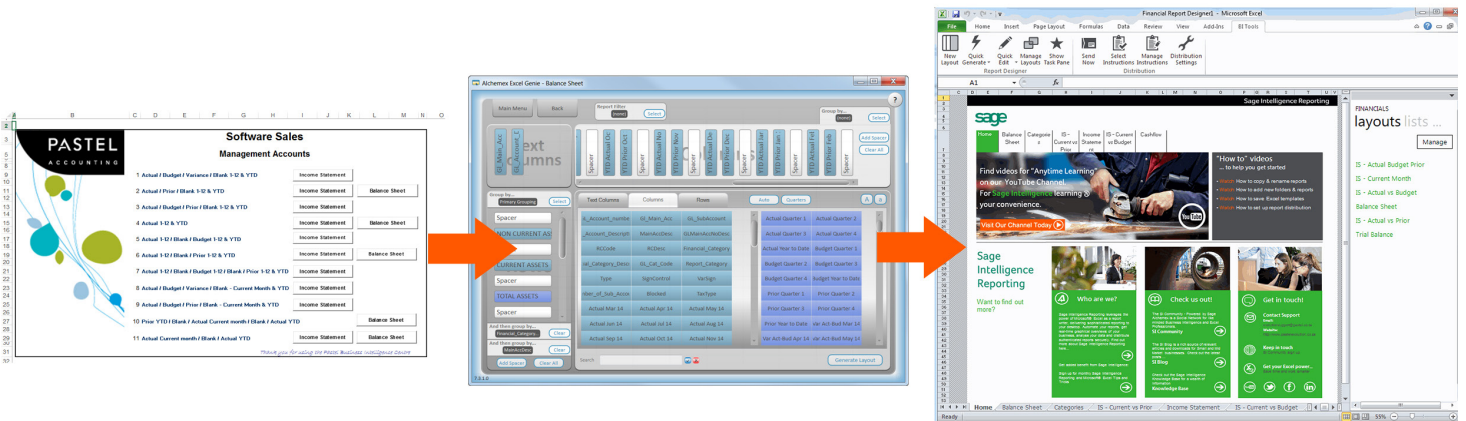


How the new Report Designer compares to the Management Pack and Excel Genie



We know that most of you still use the Management Pack and have spent hours customizing Management Pack reports to suit your client's unique requirements. Others have used the Excel Genie to help you customize your financial reports. From your valuable feedback over the years we have now evolved from the Management pack and Excel Genie to the new financial Report Designer which gives you two different methods to create and customize your financial reports depending on your Excel skills, and the complexity of your report/s.



Differences between the Management Pack and the Report Designer

Management Pack Report	Report Designer
Advanced Excel skills required to customize reports	The Report Designer provides you with two options for creating and customizing your reports.
	If you're still getting used to Excel, the Layout Generator is easy to use and automates the design and generation of simple financial report layouts quickly and accurately within Excel.
	If you're more familiar with Excel, the Task Pane provides you with a 100% Excel reporting experience. It provides you with instant and dynamic access to data within your General Ledger. Starting with a blank canvas you simply drag in data lists, formulas, or Reporting Trees from the Task Pane to your Excel sheet and the In-Memory technology will ensure that results are updated instantaneously.
You can report by Financial Categories	You can report by Account numbers and GL Category codes. Drilling down into more detail on your reports, gives you more powerful analysis of your reports.

Sage Pastel Intelligence Reporting

Standard Report Layouts include month and YTD Income Statement	Any date parameters (YTD / Quarter etc) can easily be set up and used through simple drag and drop functionality
No Reporting trees. Would need to manually group sub accounts in Excel every time they are required.	Reporting trees allow you to filter reports down to sub accounts and display multiple sub accounts in one sheet to help you make more informed business decisions
Report layout pulls all account details	Report layout can be changed to have all account details or just totals to pull through on the report layout
Drill down functionality, drills down, taking you to another sheet in the workbook (Management Pack brings all transactions back from Sage Pastel into Microsoft Excel which is loaded into your excel worksheet when you first run the report)	<p>Drill down functionality has been improved by making it a dynamic drill down which allows you to drill back into Pastel to return re-quired information on demand.</p> <p>This functionality allows the reports to be run faster as the financial Report Designer only fetches the required data from Sage Pastel when you drill down</p>
Reporting on one company only	You can now easily consolidate multiple companies within one Excel workbook. Once you have run out the Report Designer you have the ability to report off multiple companies easily by dragging and dropping your selected lists from the Task Pane.
You have a set of predefined report layouts	With the Layout Generator and Task Pane you are given the tools to run predefined report layouts which can be edited or you can create a report from scratch using the information from the General Ledger accounts in Pastel, giving you full control of your reports.
You can generate predefined reports from the menu sheet within the Management Pack	You have the choice to generate predefined report layouts from the BI Tools tab using the "Quick Generate" menu or from the Layouts tab in the Task Pane. Your customized reports are also viewed on these menus.
Missing accounts are automatically identified using the "Add Accounts" wizard to add accounts to layouts in Excel.	The missing accounts tool identifies missing accounts which then allows you to add to your layout as required.
You have to manually create Grouping and Divisional Reporting in Excel.	Reporting Trees allow you to organize your Reports by divisions, depts, and regions, saving you time and eliminating repetition. Once a reporting tree is created you can then use it for all report layouts.
When the Management Pack is run out all data from the ERP is queried and placed into the Excel workbook	The Financial Report Designer uses an In Memory Database, therefore performance of Reports has improved significantly on larger data sets, speeding up running and executing reports in Excel
10 Out the Box Income Statement Layouts 5 Out the Box Balance Sheet Layouts	<p>4 x Income Statement 1x Balance Sheet 1 x Trial Balance</p> <p>The number of out of the box layouts has been reduced, as you now have the functionality to easily create and customize your report layouts to suit your individual needs.</p>
Formulas from the Management Pack have no relevance to you.	Allows you to see if the formula is referencing the correct fields, and the correct formula is been applied.

Sage Pastel Intelligence Reporting

Differences between the Excel Genie and the Report Designer Layout Generator

Excel Genie	Layout Generator
No row sets.	Created Row Sets are centrally managed and can be used across your different Income Statement and Balance Sheet layouts that you create.
Reporting Trees for reports are pulled into report layouts when Generated	Reporting Trees are now managed in the Task Pane allowing you to quickly and easily change the filter to view different sub accounts
The user interface is filled with a lot of functionality, requiring you to have a good understanding of how the Genie works	The new user interface is simple and user-friendly with tabs to follow a step by step process. Layout Design tab with Layout Options/ Text Columns/ Columns/ Rows or Row Sets tab: where you would centrally manage your row sets. All this making the Layout Generator a lot more simpler and more user friendly
Had 3 Group by Options in the Rows Area Group 1, 2, 3	Grouping is easily handled by Row Sets, allowing you to define rules for Grouping and rolling up at Account Level or Financial Category. This gives you more control over how and what you can Group in your layout giving you more flexibility.
No Column Grouping	There is a "group by" function that allows you to group by company name, fiscal year and Branch code, so you can view figures for each in columns.
6 Out the Box Income Statement Layouts 2 Out the Box Balance Sheet Layouts	4 x Income Statement 1x Balance Sheet 1 x Trial Balance The number of out of the box layouts has been reduced, as you now have the functionality to easily create and customize your report layouts to suit your individual needs.

About The Sage Group, plc

We provide small and medium sized organisations with a range of easy-to-use, secure and efficient business management software and services - from accounting and payroll, to enterprise resource planning, customer relationship management and payments. Our customers receive continuous advice and support through our global network of local experts to help them solve their business problems, giving them the confidence to achieve their business ambitions. Formed in 1981, Sage was floated on the London Stock Exchange in 1989 and entered the FTSE 100 in 1999. Sage has millions of customers and more than 12,700 employees in 24 countries covering the UK & Ireland, mainland Europe, North America, South Africa, Australia, Asia and Brazil. For further information please visit www.sage.com.

For more information about Sage in South Africa, please visit the company website at sagesouthafrica.co.za. Follow South Africa on Facebook, [Facebook.com/Sage](https://www.facebook.com/Sage), and Twitter, [Twitter.com/SageGroupZA](https://twitter.com/SageGroupZA).

For more info, visit: Sage.com
or contact us at + 27 11 304 3000