

What's new: Sage 500 ERP 2016 Intelligence Reporting



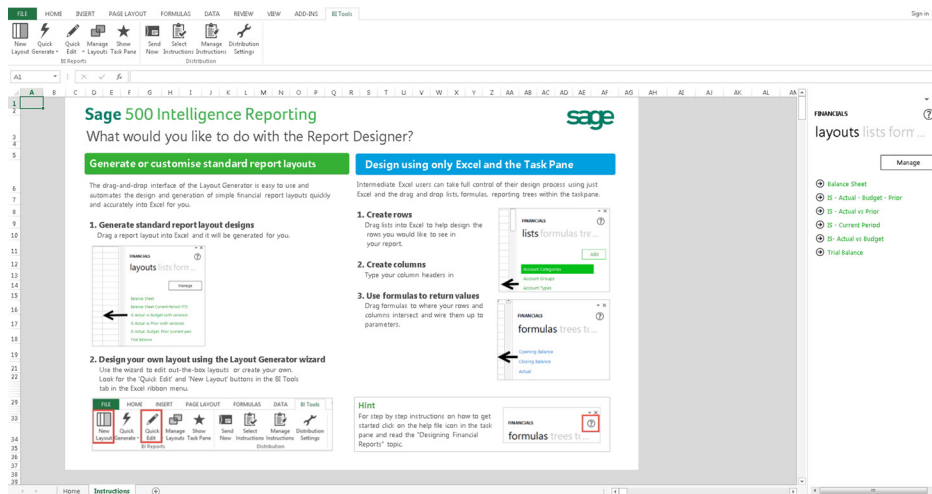
You need access to reliable business intelligence to make good decisions, manage effectively, and forecast with confidence. Sage 500 ERP 2016 gives you this and more, with maximum control and flexibility over your financial report layouts.

More control over your financial reports

With the latest upgrade, you get the combined functionality of the Report Designer Layout Generator and the Report Designer Add-In, ensuring you have all the tools you need in one place to create powerful financial reports specific to your company's needs.

The new Financial Report Designer boasts a fresh, new user interface, and has vast improvements in performance thanks to a powerful in-memory technology, giving you a quick and responsive experience when designing reports in Microsoft® Excel®.

You can choose from two methods when you create your financial reports depending on your level of Excel knowledge. For steps on how to get started and which method to use, an instructions sheet is included in the Report Designer report.



These two methods are as follows:

The Layout Generator

The Layout Generator is easy to use and automates the design and generation of simple financial report layouts quickly and accurately within Excel.

The Task Pane

The new Task Pane (previously known as the Report Designer Add-In) greatly enhances your Excel reporting experience, and is for the more experienced Excel user.

Sage 500 Intelligence Reporting

Free reports suitable to your business needs

Report Utility

Download

Sage 500 Dashboard Reports	Open
Sage 500 Financial Reports	Open
Sage 500 Inventory Reports	Open
Sage 500 Sales Reports	Open

Disclaimer: The Report Utility offers you free, downloadable reports that are compatible with the latest version of your Sage solution that intelligence Reporting integrates with. While our intelligence designers have tested these custom reports and every effort has been made to ensure that they are error free, they are created as a view and we do not warrant the rigorous quality assurance that the standard Sage Intelligence reports undergo. Therefore, no support is provided for these reports.

Install the Report Utility in 3 simple steps

Downloading a range of free reports has never been this easy

You can now get easy, ongoing access to a constantly updated library of free, automated, and Microsoft® Excel®-based financial and operational reports, thanks to the latest Report Utility.

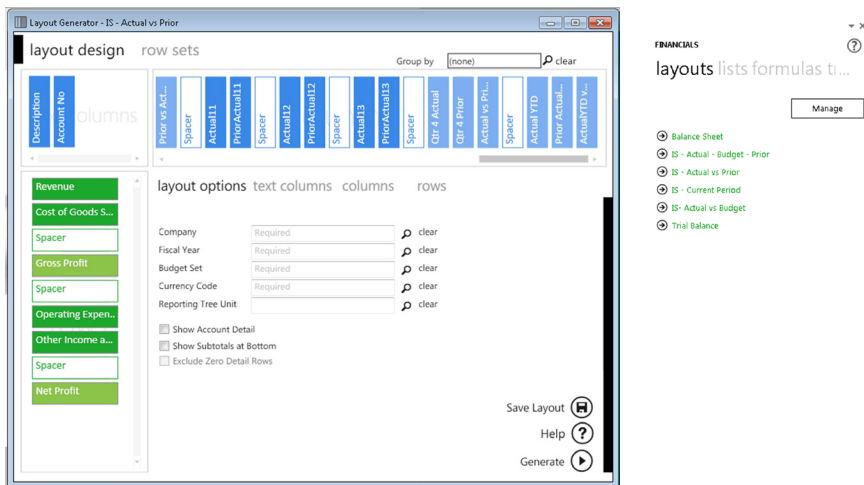
While additional reports have been available for Sage Intelligence Reporting customers on the Sage Intelligence Reporting Community for some time now, the Report Utility will now automatically detect that you are running Sage 500 ERP and show you all the free reports available for Sage 500 ERP. You can then select your required reports to be automatically imported into the Report Manager for immediate use.

Find out more about the reports available for you.

sage 500 ERP Intelligence Reporting

Easy customization using the Layout Generator

- Get a set of standard financial layouts to get you up and running immediately, which can then be edited to suit your unique requirements.
- Enjoy an enhanced interface and performance that greatly improves your user experience.
- The generated layouts are easier to customize using the "Manage Layouts" option or the functionality of the Task Pane once your layout is created.
- Exclude zero value rows from reports to make them easier to read.
- Determine row sets by multiple "Type" options, such as Account, Account Group, Account Type, Account Category, and Rollup Code.

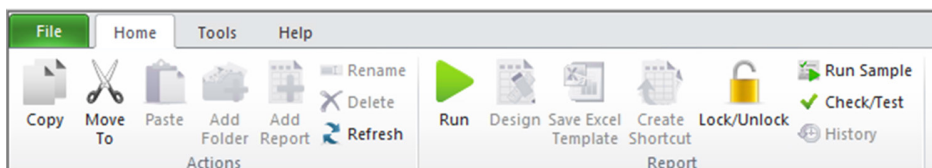


Complete reporting flexibility with the Task Pane

- Get instant and dynamic access to data within the General Ledger.
- Simply drag in data lists, formulas, or reporting trees from the Task Pane to update results instantly.
- Select your standard financial layouts from the layouts option on the Task Pane or from "Quick Generate" in the BI tools tab.
- The Missing Accounts feature helps you detect accounts missing from your report/s. Dynamic Ranges enable you to detect any changes to the General Ledger, making your reports maintenance free.
- Change the level of detail seen at a row level by using account ranges, account wildcards, and account exclusions, giving you maximum control and flexibility over your financial report layouts.
- Work with Rollup Codes to report off a single roll-up code per roll-up type and filter by preconfigured general ledger structures that have been defined in your Sage 500 ERP.

Enhanced user experience

The first thing you will notice when opening Sage Intelligence Reporting is the new look and feel.



sage 500 ERP Intelligence Reporting

Easy access to commonly used features

The Report Manager and Connector modules boasts a new ribbon feature with informative icons and labels for each function, aiding the user in easily identifying and accessing the features that they require. Menu items have been restructured and grouped and the more commonly used menu items are now accessible from the Home and Help tabs.

Simplified right-click menu

The right-click menus in the Report Manager have been simplified to provide the user with a more concise list of options as well as option labels that are more informative.

- The right-click options "Run Sample" and "Refresh" on the Report Context right-click Menu have been removed and are now accessible in the Report Manager ribbon through the Home tab.
- The Labels "Create and Link Template" and "Purge Instance History" have been replaced by less technical, and therefore more easily understandable, labels of "Save Excel Template" and "Clear Report History" respectively.

Updated look and feel of Standard Reports

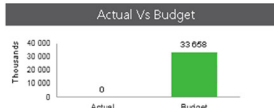
The standard Sage Intelligence Reporting reports have been modernized to give you a cleaner look and feel, as well as a quick reference to helpful Intelligence Reporting resources.

The standard reports included are Financial Report Designer, GL Transaction Detail, Financial Trend Analysis, Dashboard, and Customer Sales, Inventory, and Vendor Purchases.

Dashboard - Systems of America

From period 1 to period 9 for year 2008

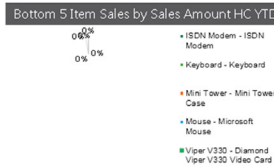
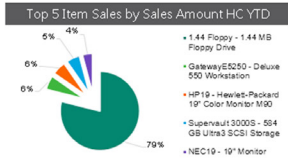
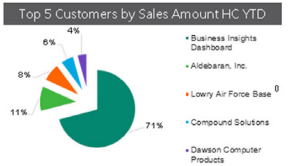
Profit & Loss	Actual	Budget	Variance	Indicator
Sales	0	34 239 449	-34 239 449	↓
Cost of Sales	0	509 805	-509 805	↓
Gross Profit	0	33 729 644	-33 729 644	↓
Expenses	0	96 128	-96 128	↓
Other Income and Expenses	0	24 177	-24 177	↓
Net Income before tax	0	33 657 693	-33 657 693	↓



Top 5 Customers YTD	
Customer Name	Sales Amt HC
Business Insights Dashboard	88 943 418
Aldebaran, Inc.	13 534 706
Lowry Air Force Base	3 970 581
Compound Solutions	7 303 640
Dawson Computer Products	5 421 719
Total	124 874 065

Top 5 Items YTD	
Item Name	Sales Amt HC
1.44 Floppy - 1.44 MB Floppy Drive	88 605 776
GatewayE5250 - Deluxe 550 Workstation	6 533 806
HP19 - Hewlett-Packard 19" Color Monitor M90	6 313 800
Supereval13000S - 504 GB Ultra3 SCSI Storage	6 216 000
NEC19 - 19" Monitor	4 674 400
Total	112 543 782

Bottom 5 Items YTD	
Item Name	Sales Amt HC
ISDN Modem - ISDN Modem	0
Keyboard - Keyboard	0
Mini Tower - Mini Tower Case	0
Mouse - Microsoft Mouse	0
Viper V330 - Diamond Viper V330 Video Card	0
Total	0



More flexibility for recipients of your reports

You now have option to send your reports with calculated formulas, allowing the receivers of your reports to see how these results were derived and what parameters can be made to give them the results they are looking for.

For more info, visit: Sage.com
or contact us at 866-996-7243