

Sage 100 ERP 2015 Intelligence Reporting



What's new in Sage 100 ERP 2015 Intelligence Reporting



Our focus for this version of Sage 100 ERP Intelligence Reporting has been to give you even more control of your financial reports. We have done this through combining the functionality of the Report Designer Layout Generator and the Report Designer Add-In and adding to its functionality so you have all the tools you need in one place to create powerful financial reports specific to your company's needs.

More control over your financial reports

The new Financial Report Designer boasts a fresh new user interface, and has vast improvements in performance through powerful In-Memory technology*, giving you a quick and responsive experience when designing reports in Microsoft® Excel®.

The new Financial Report Designer gives you two methods to create your financial reports depending on your Excel knowledge. For steps on how to get started and which method to use we have included an instructions sheet in the Report Designer report.

Benefits

- Get better **control** of your reporting.
- **Automate** your reporting processes.
- Make better decisions through better **analysis** of your data.

Solution

- Sage 100 ERP 2015
- Sage 100 ERP Intelligence Reporting

The screenshot shows the Sage 100 ERP Intelligence Reporting interface embedded in an Excel spreadsheet. The interface has a clean, modern design with a white background and green accents. At the top, there's a navigation bar with 'Home' and 'Instructions' tabs. Below that, a large image shows four people in a professional setting, with the text 'Control, Automate, Analyze.' overlaid. Underneath the image are five buttons: 'Getting started', 'FAQ's', 'How to Videos', 'Webcasts', and 'Tips and Tricks'. A paragraph of text follows, explaining the benefits of the reporting tool. At the bottom, there are social media icons for Facebook, Twitter, YouTube, and LinkedIn. On the right side, a sidebar titled 'FINANCIALS' contains a search bar and a list of categories: 'lists', 'formulas', 'trees', 'tools', and 'layouts'. The Excel spreadsheet grid is visible in the background, with the report content centered in the middle of the grid.

*An In-memory engine is a database management system that stores data entirely in your computer's RAM. Because working with data In-memory is much faster, Intelligence Reporting is able to report on large data volumes, meaning that financial reports can be run out relatively quickly.

Sage 100 ERP 2015 Intelligence Reporting

Easy customization with the Layout Generator

If you're still getting used to Excel, the **Layout Generator** is easy to use and automates the design and generation of simple financial report layouts quickly and accurately within Excel.

The Layout Generator provides you with a set of standard financial layouts to get you up and running immediately and these can then be edited to suit your unique requirements.

The Layout Generator user interface and performance has also been enhanced, greatly improving your user experience. The generated layouts have also been given a cleaner look and feel and are now easier to customize using the **Manage Layouts** option or the **Task Pane** once your layout is created.

You have greater flexibility in choosing exactly how you would like to define your report in the **Manage Layouts** option which now allows for row sets. Row sets can now be determined by multiple "type" options such as Account, Account Group, Account Type, Account Category and Rollup Code.



Sage 100 ERP 2015 Intelligence Reporting

Complete reporting flexibility

If you're more familiar with Excel, the new **Task Pane** (previously known as the Report Designer Add-In) greatly enhances your Excel reporting experience, by providing instant and dynamic access to data within the General Ledger. Simply drag in **data lists, formulas, or reporting trees** from the **Task Pane** on the right hand side of the Excel window and the In-Memory technology will update results instantaneously. You can now select your standard financial layouts from **layouts** on the **Task Pane** as well as from **Quick Generate** the BI tools tab. To save you time when updating your reports, we have added a **Missing Accounts** feature (under tools on the Task Pane) which helps you detect accounts missing from your report/s.

Depending on what you are wanting to analyze, you can change the level of detail seen at a row level by using account ranges, account wildcards and account exclusions giving you maximum control and flexibility over your financial report layouts.

To make your reporting even more seamless, Intelligence Reporting now works with Rollup Codes, so you are able to report off a single roll up code per roll up type and filter by preconfigured general ledger structures that have been defined in your Sage 100 ERP.

The image displays the Sage 100 ERP Intelligence Reporting interface within an Excel window. The main window shows a dashboard with the Sage logo, navigation tabs (Home, Instructions), a central image with the text "Control, Automate, Analyze.", and a list of resources: Getting started, FAQ's, "How to" Videos, Webcasts, and Tips and Tricks. Below this is a paragraph explaining the benefits of automation and a social media footer.

On the right side, a **FINANCIALS** task pane is visible, containing a search bar with "ABX" and a list of categories: Account Categories, Account Groups, Account Types, Budget Codes, Main Accounts, Accounts, and Rollup Codes.

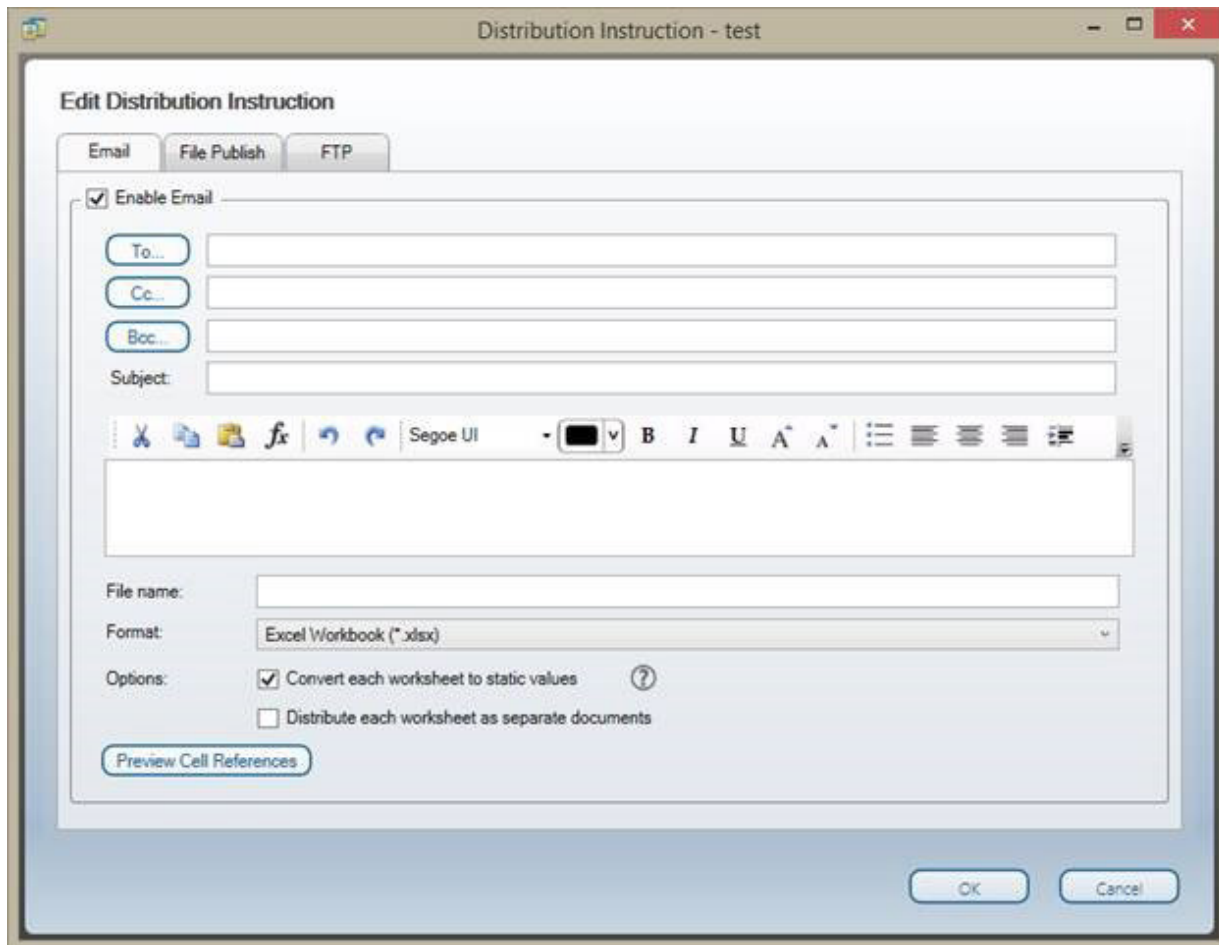
Below the main window, five smaller task pane windows are shown, each representing a different category from the main task pane:

- lists** formulates trees t...: Contains an "ABX" search box and the same category list as the main task pane.
- formulas** trees tools ...: Lists "Opening Balance", "Closing Balance", "Actual", "Actual YTD", "Budget", "Budget YTD", "Current Year", "Current Period", "Company Name", and "Account Description". Includes a "Manage" button.
- trees** tools layouts lis...: Lists "ABX Cities" and "ABX Departments". Includes a "Manage" button.
- tools** layouts lists for ...: Lists "Missing Accounts" and includes a "View" button. A note below states: "Lists all GL accounts in the chart of accounts which are not appearing in your report."
- layouts** lists formula...: Lists "Balance Sheet", "Balance Sheet Current Period YTD", "IS Actual vs Budget (with variance)", "IS Actual vs Prior (with variance)", "IS Actual, Budget, Prior (current period)", and "Trial Balance". Includes a "Manage" button.

Sage 100 ERP 2015 Intelligence Reporting

More flexibility for recipients of your reports

You now have option to send your reports with calculated formulas allowing the receivers of your reports to see how these results were derived and what parameters can be made to give them the results they are looking for.



About The Sage Group plc

We provide small and medium sized organisations, and mid-market companies, with a range of easy-to-use, secure and efficient business management software and services - from accounting, HR and payroll, to payments, enterprise resource planning and customer relationship management. Our customers receive continuous advice and support through our global network of local experts to help them solve their business problems, giving them the confidence to achieve their business ambitions. Formed in 1981, Sage was floated on the London Stock Exchange in 1989 and entered the FTSE 100 in 1999. Sage has millions of customers and 12,975 employees in 23 countries covering the UK & Ireland, mainland Europe, North America, South Africa, Australia, Asia and Brazil. For further information please visit www.sage.com.

For more info, visit: NA.Sage.com